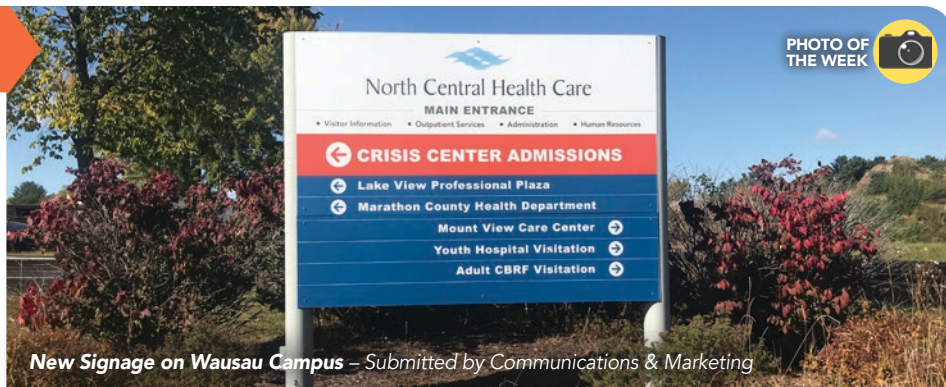




A Weekly Update  
For The Employees of  
North Central Health Care



New Signage on Wausau Campus – Submitted by Communications & Marketing

# NEWS YOU CAN USE



## WEEKLY CONNECTION WITH MICHAEL LOY

### Looking to the Future

We're in the midst of a significant outbreak of COVID in our community right now. The hospitals are raising the alarm and the degrees of separation between each of us and someone with COVID is getting smaller. Wisconsin is taking our turn as the epicenter of the pandemic right now. We can control our collective fate by wearing a mask, maintaining social distance of 6 feet or more, washing our hands regularly, and staying home when sick. Right now we have a significant number of employees who are out with confirmed cases, pending testing, or under quarantine. These are almost entirely related to community spread. I appreciate all of the members of our team who are jumping in and supporting our co-workers while they're out. A couple weeks ago, I said buckle up. We're in for a ride in the next couple weeks but I also have found myself to be a lot more hopeful over the last several days.

Taking the politics out of a vaccine debate, I have great faith in the scientists and people who are working on a vaccine. I think we will have at least one vaccine approved and starting to be distributed by the end of the year. This will be the fastest the world has ever accomplished something like this, which is remarkable, and I believe it will be safe. There's too much at stake to get this right, and they will. I also believe that given the alternative, most Americans will take it, and it will save lives. And, in a timeline of the next several weeks to months, we're going to see a breakthrough and a true end in sight. It doesn't mean we're through the most difficult part of all this, it means we're close to the other side. I can successfully see through the pandemic, and soon to the other side. I would encourage each of you to do the same. We've got this.

In the meantime, do what we can, to control what we can.

Wear a mask, maintain a distance of 6 feet or more, wash your hands, and stay home when you're sick. I'm optimistic that very soon, all we will have to do is worry about the wash your hands and stay home when you're sick parts.

Make it a great and safe day,

<b>Weekly Covid-19 Status Report</b> .....	<b>2</b>
Cases & Operational Updates	
<b>Infection Prevention Reminders</b> .....	<b>3</b>
From Our Infection Preventionist	
<b>Get Out &amp; VOTE!</b> .....	<b>4</b>
From Medical College of WI	
<b>HR Insights</b> .....	<b>5</b>
NEW Position Postings	
<b>Early Detection</b> .....	<b>6</b>
Mammogram Reminders	

### ADMINISTRATOR ON-CALL x4488 or 715.848.4488

In the event of Phone System Outage, reference the O:drive "On-Call Information Folder" for Schedule and Cell Phone #'s.

**Monday, Oct. 12 –  
Sunday, Oct. 18**

**Michael Loy**



### ULTIPRO HAS A NEW NAME Meet UKG

NCHC's Human Resources, Payroll, and Learning Management System vendor, UltiPro, has merged with another vendor and is now called "UKG". This brings a change for all employees at NCHC, any emails that previously came from UltiPro, will now be from UKG.com. You will begin to see the change take place over the next several months. Of you have any questions please contact Human Resources or IMS.

### Person-Centered Shout

### out

### Katherine Crabtree, Business Operations

**Why:** Thank you for jumping in to help a last minute project go out! You embraced the NCHC Core Values of accountability and partnership. I truly appreciated your help!

**Submitted By: Mary Jo Monday**





Cases reported below are current active employee cases. All employ see cases previously reported that are no longer shown below have been cleared to return to work from NCHC Employee Health and local health officials based on a review of the individual case details.

## NCHC COVID-19 WEEKLY STATUS REPORT

### Confidential Employee Report

Employee Cases Reported September 27 - October 8, 2020

Program	Current Active Employee Cases	Date Reported
<b>New Cases</b>		
Pine Crest Rehab Unit	1	10/7
MVCC – Occasional	1	10/6
Outpatient Services – Wausau	1	10/5
Patient Access - Antigo	1	10/5
Patient Access - Wausau	1	10/5
Comm. & Marketing - Wausau	1	10/3
Pine Crest 400	1	10/2
MVCC Southern Reflections	1	10/2
<b>Previously Reported</b>		
MVCC Legacies (GSC/LVH)	1	10/1
MVCC North./South. Reflections	1	10/1
MVCC Administration	1	9/29
Pine Crest 600, 700, 800	1	9/27

**Total Active Employee Cases 12**

### Operational Status of Service Programs:

**MVCC** - All Units on Enhanced Precautions, Weekly Testing Staff & Residents. No Outdoor, Window or Patio Visits allowed. Virtual and Compassionate Care Visits Allowed.

**Pine Crest** – Rehab, 400/600/700/800 Units on Enhanced Precautions, Weekly Testing Staff & Residents. Outdoor, Window, Virtual and Compassionate Care Visits Allowed (updated 10/8)

**BHS Inpatient** - Open and operational. No visitation allowed.

**Crisis Center** - Open and operational.

**Crisis CBRF** - Open and operational. No visitation allowed.

**Community Living** - Open and operational. No visitation allowed.

**Lakeside Recovery** – Closed. No Admissions.

**Outpatient Clinics** - Open and operational. TeleHealth appts. as much as possible. No in-person groups.

**Community Treatment** - Open and operational. TeleHealth interactions as much as possible.

**Aquatic Therapy Center** – Open. Limited Capacity. No groups.

**Adult Day and Prevocational Services** - Open and operational.

**Adult Protective Services** - Open and operational.

**Clubhouse** - Open and operational.

**Pharmacy** - Open and operational.

**Transportation** - Open and operational for medical, grocery and employment appt transportation for elderly and developmentally disabled.

Program Hours and Operations Online:  
[www.norcen.org/Covid-19](http://www.norcen.org/Covid-19)

## OCTOBER EMPLOYEE PULSE SURVEY

We Would Like Your Feedback!

Please complete the following survey by October 16 by clicking the link below. The survey will take less than a minute to complete and is just a few questions long. It is meant to gain an understanding on how we can best support staff in our ongoing communications and effort to put our employees' health and well-being first.

<http://bit.ly/OctoberPulseNCHC>

The survey link will be available at our website, Facebook page and through this email. Please only complete the survey once. We appreciate your continued dedication and hard work during this unprecedented time.

## OCTOBER ISSUE OF FRONTLINE

<http://bit.ly/OCTFrontlineEAP>

In this edition:

- Breast Cancer Awareness and Alcohol
- Protect Against IP Address
- "SmartMom" App Helps Single Parents
- What is Psychiatric Emergency?
- Coping with a Furlough
- Using Anti-Anxiety Medications
- Parkinson's Law: A Remote Workers Bugaboo
- Election Politics and the Workplace

Happy Fall everyone! We hope that you all found some time to enjoy the great weather we had. Given the upcoming election season, we want to direct your attention to the "Election Politics and the Workplace" article. An interesting point made in this article is that hot button topics, particularly politics, triggers our fight or flight stress response. Knowing this can help us identify our triggers (i.e. increased heart rate, shallow breathing, tense muscles). Intervening when we become aware of this is essential to not reacting. As always, political discussions should be avoided in the workplace. Let's practice this over the next several months.

If you or a family member within your home could benefit from counseling support, connect with us by calling 1-800-540-3758, emailing at [eap@ascension.org](mailto:eap@ascension.org), or visiting our website at [www.ascensionwieap.org](http://www.ascensionwieap.org).



## NCHC PHARMACY WANTS YOUR PAPER GROCERY BAGS

### Can You Help?

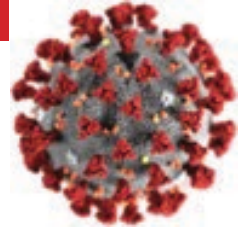


Pharmacy is in need of clean used paper grocery bags. If you have any bags you can donate, please place them in interoffice mail to the Pharmacy or drop them off at the Pharmacy or Welcome Desk. Thank you!



# Infection Prevention Reminders During COVID-19

## Don't Let Your Guard Down!



### 1 Regularly Clean High-Touch Surfaces

Examples include:

- Door Handles, Hand Rails, Counter Tops, Shared Workspaces and Offices – must be cleaned at least once daily
- Shared Equipment: Keyboards, Computer Mouse, Shared Laptops, Vitals Machines – cleaned after each use

Only use NCHC-approved, EPA registered products to clean the surfaces.

- The approved disinfectants for cleaning surfaces at NCHC are:
  1. Purple PDI Wipes has a 2-minute contact time (time surfaces need to stay wet to kill bacteria and viruses)
  2. 3M-40A has a 3-minute contact time.
- Making sure to follow the manufacturer's recommended contact times for each cleaner (listed on the container, if not in MSDS program on desktop).
- Scan your area and check for expiration dates on all hand sanitizers or other cleaning products in your area. Do you have enough supplies in your area?
- If you have questions on what cleaners are typically used for different surfaces or equipment consult with Infection Prevention or Housekeeping Manager for further instruction.

### 2 Hand Hygiene

Use Alcohol Hand Sanitizers for all moments of Hand Hygiene with the exception of visibly soiled hands or after using the restroom – Use of soap and water is required.

#### Your 7 Moments of Hand Hygiene

- Before Touching a Patient
- Before clean/aseptic procedures
- Before touching or adjusting your mask
- After a body fluid exposure risk
- After touching a patient
- After touching a patient's surroundings
- After touching or adjusting your mask



### 3 Wear Your PPE

- Wear your mask appropriately so it covers both your nose and mouth at the same time.
- If you have to adjust your mask, remember to perform hand hygiene before and after doing so.
- Wear the appropriate PPE – Make sure you are donning and doffing your PPE correctly.

Thank you for all that you do to keep all those we serve and yourself safe!



**SAFE VOTING INITIATIVE**  
WISCONSIN 2020



# STAYING HEALTHY AT THE POLLS

- ✓ WEAR YOUR MASK
- ✓ MAINTAIN 6 FEET FROM OTHERS
- ✓ WASH YOUR HANDS BEFORE AND AFTER

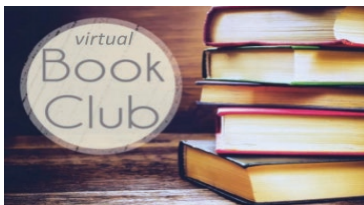
Use the QR codes below to register to vote, request an absentee ballot, or find your municipal clerk for in-person registration and ballot drop-off. **The deadline to register online is October 14th.** You can also visit [www.myvote.wi.gov](http://www.myvote.wi.gov) for more information.

(Simply aim your cellular camera at the desired box for the link.)



**Election Day is Tuesday, November 3, 2020**

MEDICAL COLLEGE OF WISCONSIN // SAFE VOTING TASK FORCE



**Spread Community  
Awareness through  
conversation...**

*"Dementia Reimagined"*  
By Tia Powell, MD

Join communities' around Wisconsin in a virtual book club! We will *reimagine* how we live and care for people with dementia by building a life of joy and dignity and give hope throughout the lifespan. Open to all; caregivers, professionals, anyone wanting to learn and discuss dementia in a new light for the purpose of building dementia friendly communities.

Launching November 2020. Led by Dementia Care Specialists from around the state via phone or Zoom virtual meetings each week. Pick a day/time that works for you:

- Mondays 2:00pm-3:00pm
- Mondays 4:30pm-5:30pm
- Tuesdays 1:00pm-2:00pm
- Wednesdays Noon-1:00pm
- Thursdays 1:00pm-2:00pm
- Fridays 9:00am-10:00am

To register for a group sign up here:

<https://www.signupgenius.com/go/10C0D4EA9AF23A4F4C70-dementia>

For questions, please contact:

**Scott Seeger, Dementia Care Specialist**

715-261-6066 or [scott.seeger@adrc-cw.org](mailto:scott.seeger@adrc-cw.org)

Need help finding a copy of the book? Let us know. \*Book scholarships available to caregivers upon request\*



**Welcome to the Virtual Book Fair**  
Bringing the book fair right to you!

Books and Gifts at Great Prices!  
Ordering made easy! Books arranged by subject.

Pay with PayPal or Check (When filling out name, phone, etc. please put "North Central Health Care Center" as Company)

Make checks out to: Books are Fun  
(Check option appears when you are ready to check out).

**Orders will be taken**  
**Tuesday, October 13th – Tuesday, October 20th**  
Your order will be delivered on  
**Thursday, October 22nd or Friday, October 23rd**

<https://bookfaironthemove.com/>

[dlemke@dwave.net](mailto:dlemke@dwave.net)

Fill this out for a chance to win a gift certificate  
for the next book fair:

Name: \_\_\_\_\_

Personal Email: \_\_\_\_\_

Update me about future public book fairs in this area

\_\_\_\_\_ Yes or \_\_\_\_\_ No



**October 29th, 2020**  
**9:00-11:00 via Microsoft Teams**  
**Virtual CARE**  
**Network Meeting**

**Be a Part of the Change for Marathon County!**

Join us for the second CARE (Coordinating All Resources Effectively) Network meeting. All individuals who work to better the lives of Marathon County residents are welcome to attend to increase their connections with local resources. Share your program information and expand your knowledge about resources available in our community. Learn about recent changes in procedures and also hear from our keynote speakers.



**Keynote Speaker:**

**Tamara King:**  
Occupancy Specialist  
with the Wausau  
Community  
Development  
Authority presenting  
on **River View Towers,**  
**Terrace, Section 8 and**  
**Public Housing**

**Laura Krause:**  
Mobility Manager with  
Forward Service Corp  
Presenting Information  
on **Wheels to Work**  
**Program**

To register for this  
event, please click  
the link below:

[CARE Network  
Meeting Registration](#)

For more information,  
please contact:

Katie Knospe

E: [kknospe@fsc-corp.org](mailto:kknospe@fsc-corp.org)  
P: 608-472-1409

Emily Nowicki

E: [enowicki@chw.org](mailto:enowicki@chw.org)  
P: 715-937-8910



# HRinsights

## New! Position Posting

**Title:** RN Nurse Educator **Status:** Full Time  
**Location:** Wausau Campus

**Apply Online!** <http://bit.ly/NCHCNurseEducator>

Are you passionate about nursing? Want to share your passion and teach others in the healthcare profession while advancing your own career? As a RN Nurse Educator at North Central Health Care, you will provide development expertise as an educator, consultant, facilitator, change agent, preceptor, leader, and researcher for a specific unit or department. This position supports the development of clinical team members through the facilitation of educational processes including needs assessment, learning development, planning, implementation, and evaluation to ensure initial and ongoing competency to improve and advance clinical care. You will lead, plan, assess, organize, develop and implement educational programs designed to orient employees, improve job skills, and develop potential capabilities to meet North Central Health Care's strategic plan and the training needs of the organization.

### Qualifications - Required:

- Bachelor's degree in Nursing earned at an accredited four year college or university.
- Associate Degree in Nursing will be considered based on years of education or instruction experience and education plan to obtain required credentials to support the needs of the program.
- Registered Nurse registration as required by the Wisconsin State Board of Nursing
- Minimum of 2 years of nursing experience preferably in the hospital or long term care setting.
- Current BLS (CPR) Certification or ability to obtain within 90 days of hire.

### Preferred:

Master's Degree in Nursing. Specialized training or acquired specialized training, or have had experience in areas such as education, nursing service administration, restorative nursing, psychiatric nursing, or geriatric nursing.

## Position Posting

**Title:** Housekeeping Aide  
**Status:** Full Time **Location:** Wausau  
**Apply Online!** <https://bit.ly/30RK9dd>

To provide North Central Health Care's main campus, a quality housekeeping service that ensures a clean safe environment. One - 1.0 FTE (80 hours per pay period) Monday-Friday 6:30 am - 3:00 pm with working every other weekend One - 1.0 FTE (80 hours per pay period) Monday-Friday 3:00 pm - 10:00 pm with working every other weekend

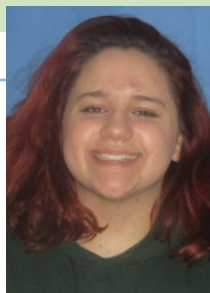
# AWESOMENESS WANTED!

DO YOU KNOW SOMEONE WHO IS AS AWESOME AS YOU?

Text "Refer" to **715.598.3663** and you are eligible for a referral bonus when they join our team!

## SHARING SOME NEWS FOR ALL EMPLOYEES From Our Partners at Rasmussen College

NCHC has an alliance with Rasmussen College which allows you to save money on your tuition\*. Visit [rasmussen.edu/norcen](http://rasmussen.edu/norcen) to request information about the program and learn about all the ways to save on your continued education. You can also join Rasmussen College for a quick 15 minute webinar on Saturday, October 17th at 10am CST to learn more about your options. To register, visit: [rasmussen.co/webinar](http://rasmussen.co/webinar) today!



## ON THE MOVE

### Promotions and Transfers

Congratulations to Chloe Nylund on her recent transfer from Nursing Home Long Term Care to a Behavioral Health Tech in Crisis! Congrats!

## TAKE YOUR SKILLS TO THE NEXT LEVEL

Register for a  
Virtual Information Session



Learn how your company supports your personal development during the Rasmussen College Virtual Information Session.

Are you ready to advance your healthcare skills? Whether you work directly with patients or behind the scenes, there is a Health Sciences or Nursing degree for you at Rasmussen College. This virtual information session will give you the chance to learn more about tuition grant opportunities to help you earn your degree.

### Rasmussen College Virtual Info Session:

Saturday, October 17th, 2020

10am | CST | 15 minutes

Register: [rasmussen.co/webinar](http://rasmussen.co/webinar)

To learn more, text **DEGREE20** to **96194** or visit [rasmussen.edu/corporate](http://rasmussen.edu/corporate)



<https://corporate.rasmussen.edu/sms> Mobile Text Summary Terms & Conditions: You will be subscribed to receive a one-time SMS alert from Rasmussen College. Max 1 msg/ mo. Message & Data Rates May Apply. This service is available for subscribers on AT&T, Verizon Wireless, T-Mobile\*, Sprint, Virgin Mobile USA, Cincinnati Bell, Centennial Wireless, U.S. Cellular\*, Boost, MetroPCS, and others in the US. The wireless carriers are not liable for delayed or undelivered messages. User will receive SMS M/F if the device does not support MMS. For help in the US, text HELP to 96194. You may also email [sms@rasmussen.edu](mailto:sms@rasmussen.edu) or call 866-866-0009. You may stop mobile subscription at any time by sending text message STOP to Short Code 96194 in the US. Your phone must have text messaging capability.



## tidbits on benefits

## WELLNESS CORNER

Submitted by Sherry Gatewood, PA

## American Cancer Society Recommendations for the Early Detection of Breast Cancer

"Finding breast cancer early and getting state-of-the-art cancer treatment are the most important strategies to prevent deaths from breast cancer. Breast cancer that's found early, when it's small and has not spread, is easier to treat successfully. Getting regular screening tests is the most reliable way to find breast cancer early.

## What are screening tests?

The goal of screening tests for breast cancer is to find it before it causes symptoms (like a lump that can be felt). Screening refers to tests and exams used to find a disease in people who don't have any symptoms. Early detection means finding and diagnosing a disease earlier than if you'd waited for symptoms to start.

Breast cancers found during screening exams are more likely to be smaller and still confined to the breast. The size of a breast cancer and how far it has spread are some of the most important factors in predicting the prognosis (outlook) of a woman with this disease". (ACS, 2020)

Women can perform monthly self-breast exams to find suspicious lumps and report to their health care provider. This is controversial for average risk women without a family history of breast cancer. Women do get a breast exam by a health care provider every year. This should not be used as a screening method without the addition of mammogram. Annual to Biannual mammogram screening begins at age 40 and can detect breast cancers one to four years before a breast cancer is evident. They are performed annually at age 50. Studies show that mammograms have proven to decrease breast cancer related deaths.



Sherry Gatewood, PA

## Mammograms

"Mammograms are low-dose x-rays of the breast. Regular mammograms can help find breast cancer at an early stage, when treatment is most successful. A mammogram can often find breast changes that could be cancer years before physical symptoms develop. Results from many decades of research clearly show that women who have regular mammograms are more likely to have breast cancer found early, are less likely to need aggressive treatment like surgery to remove the breast (mastectomy) and chemotherapy, and are more likely to be cured.

Mammograms are not perfect. They miss some cancers. And sometimes a woman will need more tests to find out if something found on a mammogram is or is not cancer. There's also a small possibility of being diagnosed with a cancer that never would have caused any problems had it not been found during screening. (This is called overdiagnosis.) It's important that women getting mammograms know what to expect and understand the benefits and limitations of screening". (ACS, 2020)

If you are due for your annual mammogram or have any concerns about your breast health or family history, see your primary care provider or schedule an appointment at the Employee Health and Wellness Center.

American Cancer Society (ACS). (2020) American Cancer Society Recommendations for the Early Detection of Breast Cancer. Retrieved on 10/6/2020 from <https://www.cancer.org/cancer/breast-cancer/screening-tests-and-early-detection/american-cancer-society-recommendations-for-the-early-detection-of-breast-cancer.html>

## EMPLOYEE HEALTH &amp; WELLNESS CENTER

1100 Lakeview Drive, Wausau, WI  
North Central Health Care Campus  
Door 25

Schedule an Appointment:  
715.843.1256 or MyAspirus.org

## Clinic Hours

Monday - Wednesday - Friday: 8:00 am - 4:30 pm  
Tuesday: 6:30 am - 3:00 pm  
Thursday: 10:00 am - 6:30 pm



Thank You!

Thank you so much for all of your sacrifices!  
~Ebony W.



Thank You!

Thank you for your hard work and dedication during this time!  
~Paxton M.



Oh, BABY!



Do you have a birth announcement you want to share with our NCHC Family? Send your announcement and picture (if desired) to your manager for sharing in the News You

Can Use. Monthly, we will include all the newest members of our NCHC family. Be sure to include: Employee's Name, Department, any other family member names (spouse, partner, siblings) and the name and birth date of your little one. We love photos, too, but we respect your privacy, so share what you wish, if you wish!



## Meet Alanna LaMae Zoromski!

Daughter of Deidra Zoromski, Case Manager in Community Treatment Adult. Alanna was born at 8lbs 8oz! Everyone is doing well, happy and healthy!!





UPDATE!

• **ALL NCHC Employees** are eligible to receive their flu shot at the NCHC Employee Health & Wellness onsite clinic or within in their program **AT NO CHARGE**. Employees do not need to be covered under the NCHC Health Plan to get your flu shot there.

UPDATE!

• However, **spouses and dependents** must be on the NCHC Health Plan to receive a flu shot at the NCHC Employee Health & Wellness onsite clinic. The clinic fee will be waived and cost of flu shot will be covered under your NCHC Health Plan.

**Flu Shots are Required by ALL Employees by November 30, 2020**



# NOT THE FLU!

**Protect yourself.  
Protect your family.  
Protect those we serve.**

All staff are required to participate in the NCHC influenza vaccination program, which means either a vaccination needs to be administered or NCHC must have a valid declination on file for each employee by November 30, 2020.

## 2 Ways to Get Your Flu Shot!

1

This year we will be partnering with the **Aspirus Employee Health & Wellness Center** to help administer vaccinations. You may call **715.843.1256** to make an appointment time that is convenient for you.

2

Also, staff in designated programs may have their vaccination administered within their programs by designated nursing staff.

Antigo Center – Kristin King  
Merrill Center – Alexa Kufalk  
Residential – Jenni Kessen  
BHS – Sheri Lawrence & Patty Duffrin  
Mount View – Connie Gliniecki  
& Nursing Leadership Team  
Pine Crest – Destiny Lemke & Ryan Hanson



NCHC Wausau Campus  
Door 25

### Clinic Hours:

M – W – F:  
8:00 am - 4:30 pm

Tuesday:  
6:30 am - 3:00 pm

Thursday:  
10:00 am - 6:30 pm

### Have dependents on the NCHC Health Plan?

The **Aspirus Employee Health & Wellness Center** is able to administer flu shots for spouses and dependents enrolled in the NCHC Health Plan! Call the Employee Health & Wellness Center schedule their appointment!

100520\_InfPrev

**Questions? Contact NCHC Employee Health at 715.848.4396**



# Check Your CPR Certification!

Does it expire between January 1, 2020 and February 1, 2021?

If you answered YES, then you need to read these important instructions below!

## CPR CERTIFICATION

NCHC is moving to a blended BLS (CPR) certification process. Staff will complete the classroom portion online through the American Heart Association and then complete their skills validation with a certified instructor. This allows us to offer educational opportunities for staff to learn at their own pace while validating competence in person utilizing competency checklists.

Staff are being assigned the course by certification expiration date and it is very important that they complete both the online portion of the training as well as the in-person competency skills validation within their assigned timeframe. **We currently have staff that are past their re-certification date due to the COVID-19 extensions. Those extensions are no longer valid.**

There are limited skills validation sessions and only six people can register/attend each session. The next round of skills validation sessions at NCHC will not take place until February 2021.

**If staff certifications expire between 1-1-2020 and 2-1-2021 they will need to attend one of the scheduled sessions below.** For this reason, staff need to begin the process to renew their CPR certification as soon as it is assigned.

The following steps must be done in order:

1. Complete the online training module through the American Heart Association
  - Organizational Development will assign the course to those that need it in UltiPro Learning
  - Staff will need to request a personalized learning access code from Mary Jo Monday
2. Successfully pass the 25 question knowledge exam through the American Heart Association
3. Upload the certificate of completion from the American Heart Association into UltiPro Learning
4. Enroll to attend a skills validation session (listed below)

*Note: staff will only be able to enroll in the session after successfully completing the online training and uploading the certificate into UltiPro Learning*

## Scheduled Skills Validation Sessions

Tuesday, October 6	8:00am – 10:00am	Wausau Board Room
Tuesday, October 6	10:00am – Noon	Wausau Board Room
Thursday, October 8	12:00pm – 2:00pm	Wausau Board Room
Thursday, October 8	2:00pm – 4:00pm	Wausau Board Room
Tuesday, October 13	8:00am – 10:00am	Wausau Iris Room
Tuesday, October 13	10:00am – Noon	Wausau Iris Room
Thursday, October 15	12:00pm – 2:00pm	Wausau Computer Lab
Thursday, October 15	2:00pm – 4:00pm	Wausau Computer Lab
Tuesday, October 20	8:00am – 10:00am	Wausau DeSantis Room
Tuesday, October 20	10:00am – Noon	Wausau DeSantis Room
Wednesday, October 21	4:00pm – 6:00pm	Pine Crest Training Room
Thursday, October 22	12:00pm – 2:00pm	Wausau Board Room
Thursday, October 22	2:00pm – 4:00pm	Wausau Board Room
Tuesday, October 27	8:00am – 10:00am	Wausau Computer Lab
Tuesday, October 27	10:00am – Noon	Wausau Computer Lab
Thursday, October 29	12:00pm – 2:00pm	Wausau Computer Lab
Thursday, October 29	2:00pm – 4:00pm	Wausau Computer Lab



**Log into UltiPro Learning today to begin your CPR Certification process!**

**Complete Steps 1 - 4 and register for your skills validation session. Only 6 people allowed per session!**

**Questions?** Email Mary Jo Monday at [MMonday@norcen.org](mailto:MMonday@norcen.org) or call 715.841.5162